

Condo for sale 1 bedroom 33.33 m² in Centric Sea, Pattaya

Introducing the highly sought-after one-bedroom condo located in Centric Sea, Pattaya. This gem is situated in the heart of Central Pattaya, offering a premium lifestyle in the city's vibrant neighborhood, and the property is listed for 3,860,000. Located on the 24th floor of a 44-floor high rise, the property offers stunning panoramic views that dazzle during the day and illuminate beautifully at night. With a spacious area of 33.33 sqm, this condo promises a comfortable and stylish living area that beautifully marries practicality with luxury. The condo is fully furnished, accommodating to a move-in-ready living experience. Every little corner of this property has been professionally designed, offering sophistication and elegance at ev...

฿ 3,860,000

UNIT PARAMETERS:

UID	FS-240034
quota	foreign quota
type	1 bedroom
size	33.33m ²
floor	24
view	sea view
transfer fee payer	50/50

PROJECT PARAMETERS:

district	Central Pattaya
buildings	3
floors	44
built in	2015
maintenance	฿ 21,998/year

FACILITIES:

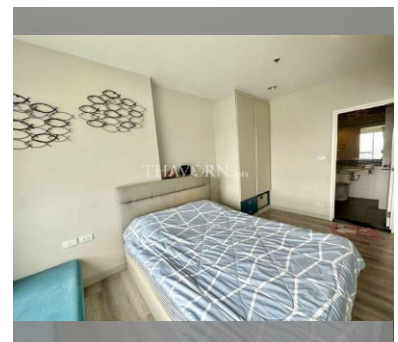
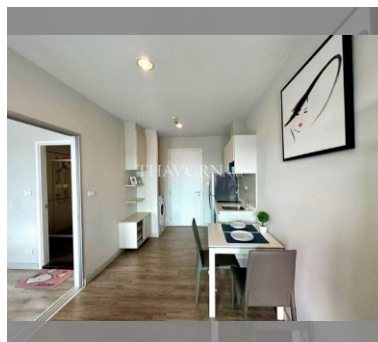
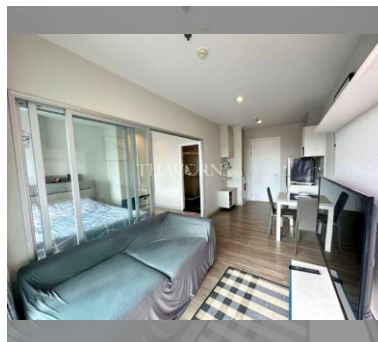
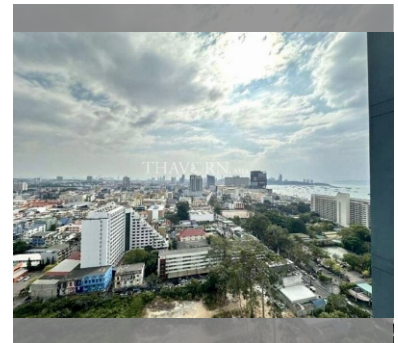
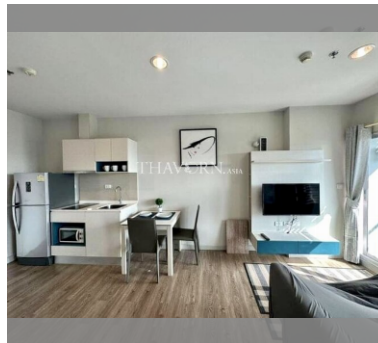
General information: highrise, multy-level parking, covered parking.

Swimming pool: swimming pool, rooftop pool.

Chill zone: chill zone, garden, rooftop chillout.

Health zone: gym.

Other: lobby, clubhouse, CCTV, security, minimart.

[details](#)