

Condo for sale 1 bedroom 34.35 m² in Paradise Park, Pattaya

Welcome to your dream home in the heart of Pattaya! This charming 1-bedroom apartment in the prestigious Paradise Park condominium is your perfect getaway or investment opportunity. Nestled in the vibrant Jomtien area, this cozy 34.35 m² flat offers everything you need for a comfortable and convenient lifestyle. Situated on the 3rd floor of an 8-story building, this fully furnished apartment is ready for you to move in and start enjoying the best of Pattaya. With a price tag of just 1,650,000, it's an unbeatable deal for those looking to own a piece of paradise. The Paradise Park complex is renowned for its top-notch amenities and prime location. Whether you're looking to relax by the pool, stay active in the fitness center, or explore t...

฿ 1,650,000

UNIT PARAMETERS:

UID	FS-239838
quota	foreign quota
type	1 bedroom
size	34.35m ²
floor	3
view	pool view
quality	not chosen
transfer cost	
transfer fee payer	50/50
additional cost	

PROJECT PARAMETERS:

district	Jomtien
buildings	3
floors	8
built in	2012
maintenance	฿ 14,427/year

FACILITIES:

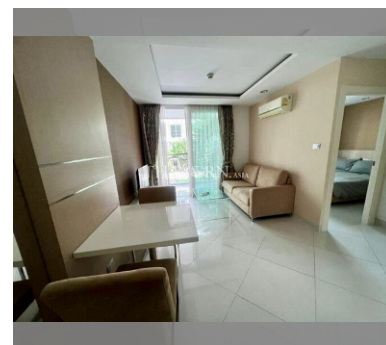
General information: resort, underground parking.

Swimming pool: swimming pool, kids pool.

Chill zone: chill zone, garden.

Health zone: gym.

Other: lobby, kids playgarden, CCTV, security, minimart.



details

