

## Condo for sale 1 bedroom 27 m<sup>2</sup> in Edge Central Pattaya, Pattaya

Discover urban living at its finest with this chic 1-bedroom apartment in the prestigious Edge Central Pattaya! Nestled in the heart of Central Pattaya, this stunning 27 sqm flat offers the perfect blend of comfort and convenience. Perched on the 15th floor of a modern 31-story building, this fully furnished gem boasts contemporary interiors and sweeping city views. Whether you're a savvy investor or looking for a stylish new home, this property is a fantastic opportunity under foreign ownership quota. Priced at 5,910,000, this apartment in Edge Central Pattaya is your gateway to a vibrant lifestyle, surrounded by the best that Pattaya has to offer. Don't miss out on making this exquisite space your own!

### ฿ 5,910,000

#### UNIT PARAMETERS:

UID	FS-239785
quota	foreign quota
type	1 bedroom
size	27m <sup>2</sup>
floor	15
view	sea view
quality	not chosen
transfer cost	
transfer fee payer	50/50
additional cost	

#### PROJECT PARAMETERS:

district	Central Pattaya
buildings	1
floors	31
built in	2021

#### FACILITIES:

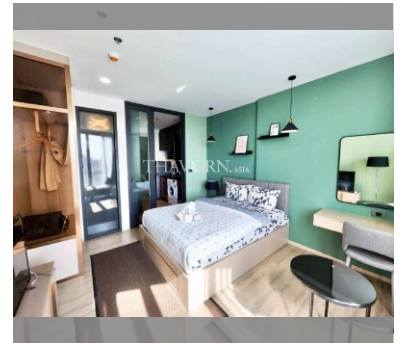
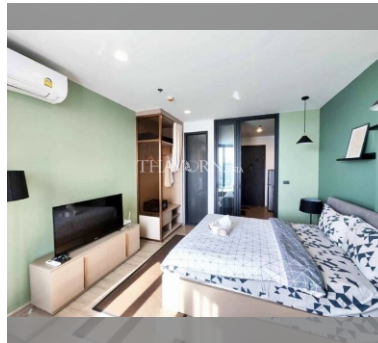
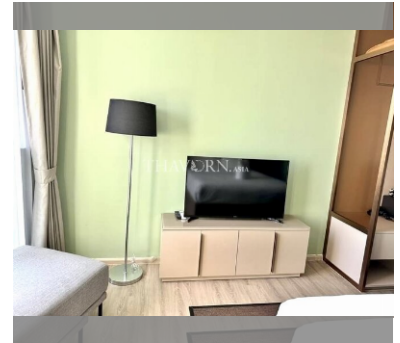
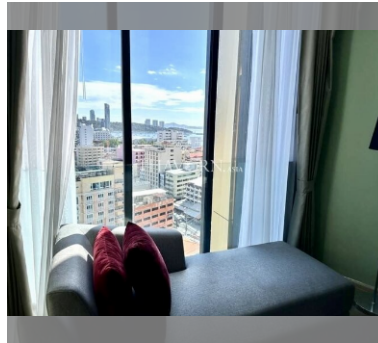
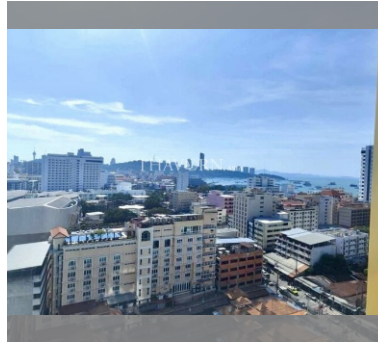
**General information:** highrise, meters to beach: 500, minutes to beach: 10, multi-level parking, covered parking.

**Swimming pool:** swimming pool, rooftop pool, pool bar .

**Chill zone:** chill zone, garden, rooftop chillout, barbeque areas.

**Health zone:** gym, sauna.

**Other:** reception, lobby, meeting room, games room, CCTV, security.



details

