

Condo for sale 2 bedroom 63 m² in Dusit Grand Park, Pattaya

Discover the perfect blend of luxury and comfort with this exquisite 2-bedroom condo in Dusit Grand Park, Pattaya, located in the serene Jomtien area. Spanning a generous 63 m² on the sixth floor of an 8-story building, this property offers a superb living environment with stunning interiors and tasteful furnishings. This fully furnished condo is ready for you to move in and start enjoying its modern amenities and stylish décor. Both bedrooms are designed to offer utmost comfort and relaxation, making it an ideal choice for both families and professionals seeking a prestigious living space. Priced at 4,610,000, this condo is a great investment in one of Pattaya's sought-after locations. The foreign quota ownership allows expats to own th...

฿ 4,610,000

UNIT PARAMETERS:

UID	FS-239539
quota	foreign quota
type	2 bedroom
size	63m ²
floor	6
view	city view
transfer cost	128K
transfer fee payer	50/50

PROJECT PARAMETERS:

district	Jomtien
buildings	6
floors	8
built in	2015
maintenance	฿ 26,460/year

FACILITIES:

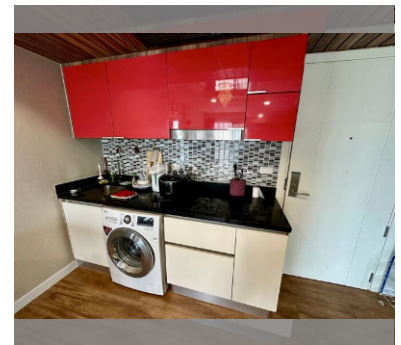
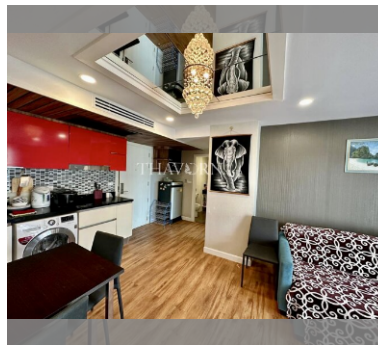
General information: resort, meters to beach: 500, minutes to beach: 10, underground parking, open parking.

Swimming pool: swimming pool, kids pool, water slides, waterfall, jacuzzi.

Chill zone: chill zone, garden.

Health zone: gym, sauna.

Other: lobby, clubhouse, CCTV, security, room service.

[details](#)