

## Condo for sale 2 bedroom 63 m<sup>2</sup> in Dusit Grand Park, Pattaya

Welcome to your dream condo in the heart of Jomtien, Pattaya! Nestled in the prestigious Dusit Grand Park, this fully furnished 2-bedroom flat offers a perfect blend of comfort and style. Spanning 63 square meters, this cozy abode is situated on the 3rd floor of an 8-story building, ensuring a serene living experience with a touch of urban charm. Priced attractively at 3,850,000, this property boasts modern interiors and is ready for you to move in. Whether you're looking to invest or find a new home, this condo is an excellent choice within the Thai quota. Don't miss out on this fantastic opportunity to own a slice of paradise in one of Pattaya's most sought-after locations. Come and see for yourself what makes this condo in Dusit Gran...

### ฿ 3,850,000

#### UNIT PARAMETERS:

UID	FS-239472
quota	thai quota
type	2 bedroom
size	63m <sup>2</sup>
floor	3
view	pool view
quality	good
equipment	furniture, kitchen appliances, smart home system
online viewing	on
transfer cost	
transfer fee payer	50/50
additional cost	

#### PROJECT PARAMETERS:

district	Jomtien
buildings	6
floors	8
built in	2015
maintenance	฿ 26,460/year

#### FACILITIES:

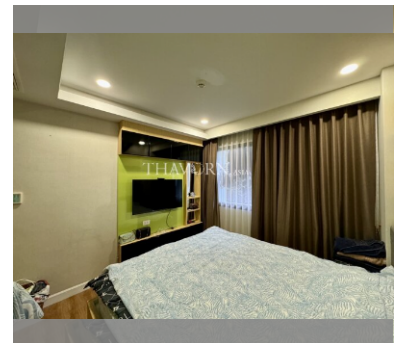
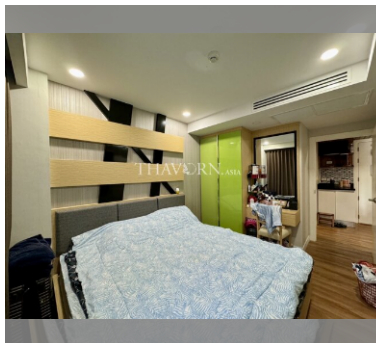
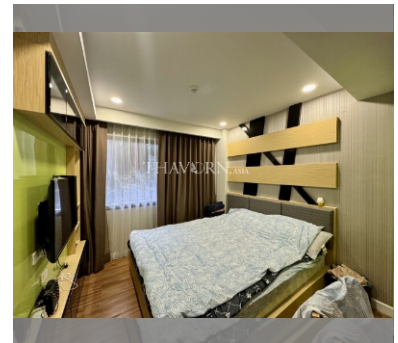
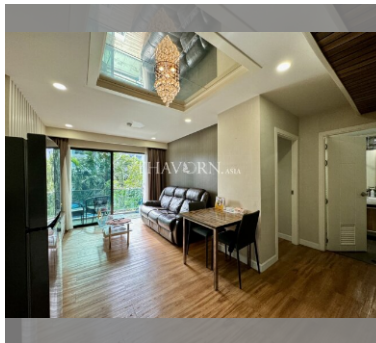
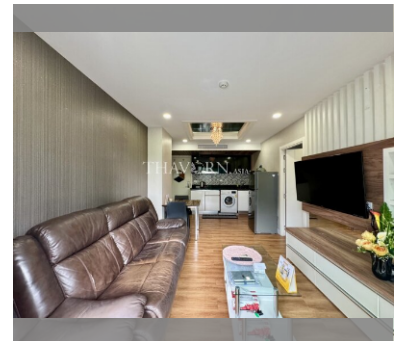
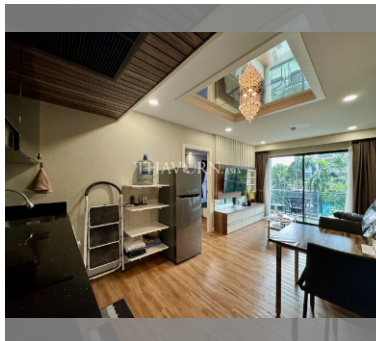
**General information:** resort, meters to beach: 500, minutes to beach: 10, underground parking, open parking.

**Swimming pool:** swimming pool, kids pool, water slides, waterfall, jacuzzi.

**Chill zone:** chill zone, garden.

**Health zone:** gym, sauna.

**Other:** lobby, clubhouse, CCTV, security, room service.



details

