

Condo for sale studio 26.25 m<sup>2</sup> in Diana Estates, Pattaya

Discover your perfect getaway in the heart of Central Pattaya with this charming studio apartment in the esteemed Diana Estates! Spanning 26.25 square meters, this fully furnished flat is a cozy haven that offers both comfort and convenience. Situated on the first floor of a four-story building, this delightful studio is ideal for those seeking a serene retreat in a vibrant city. The apartment comes fully equipped with everything you need, making it easy to settle in and start enjoying your new home right away. Priced at just 1,800,000, this property is a fantastic opportunity for anyone looking to invest in a prime location in Pattaya. With Thai quota ownership, you can enjoy peace of mind and legal security. Don't miss out on this in...

## ฿ 1,800,000

### UNIT PARAMETERS:

UID	FS-238584
quota	thai quota
type	studio
size	26.25m <sup>2</sup>
floor	1
view	city view
quality	not chosen
transfer cost	48,271 baht
transfer fee payer	Seller and Buyer 50/50
additional cost	

### PROJECT PARAMETERS:

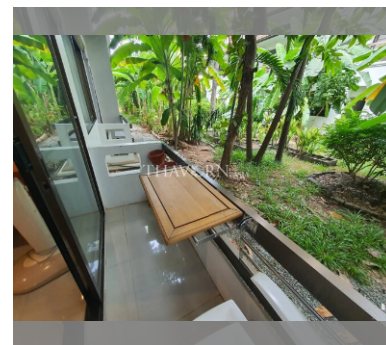
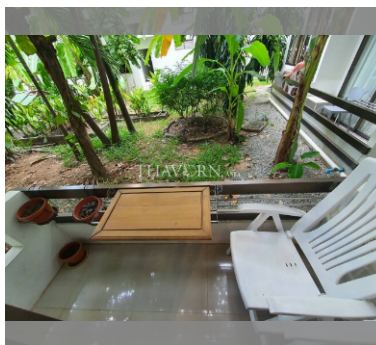
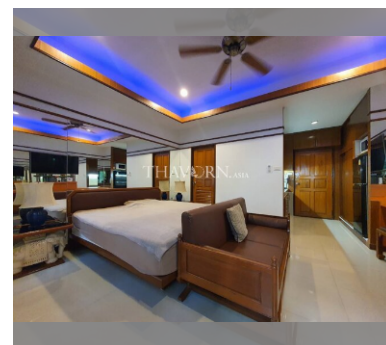
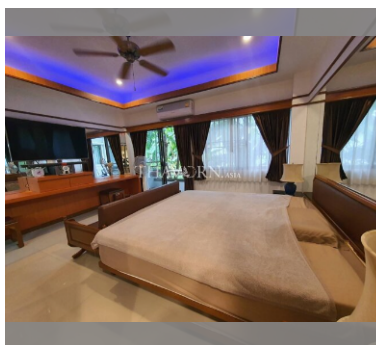
district	Central Pattaya
buildings	1
floors	4

### FACILITIES:

General information: lowrise, open parking.

Swimming pool: swimming pool.

Health zone: gym.



details

