

Condo for sale 1 bedroom 25 m² in The Grand Jomtien, Pattaya

฿ 1,750,000

UNIT PARAMETERS:

UID	FS-237497
quota	thai quota
type	1 bedroom
size	25m ²
floor	7
view	partial sea view
quality	not chosen
transfer fee payer	Included all fees

PROJECT PARAMETERS:

district	Jomtien
buildings	2
floors	30
built in	2015
maintenance	฿ 6,000/year

FACILITIES:

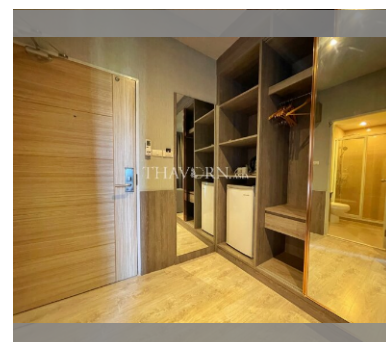
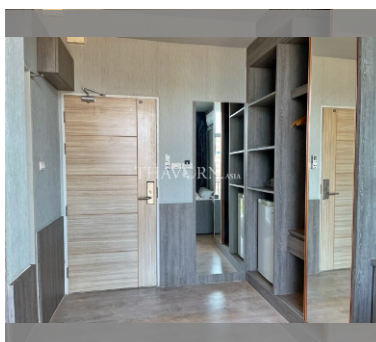
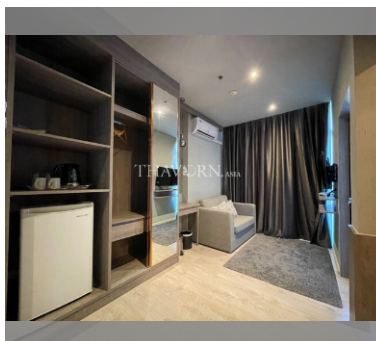
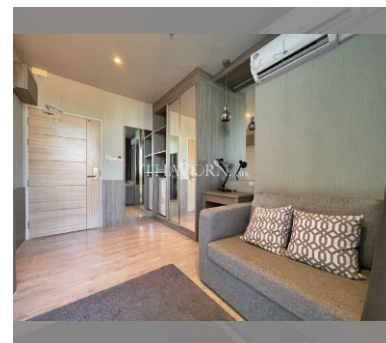
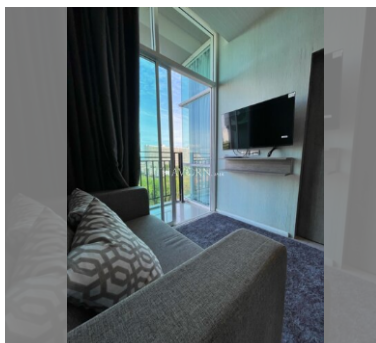
General information: highrise, shuttle bus, covered parking.

Swimming pool: swimming pool.

Chill zone: garden.

Health zone: gym, sauna.

Other: reception, CCTV, security.



details

