

Condo for sale 2 bedroom 74 m<sup>2</sup> in Porch Land 2, Pattaya

Discover the perfect blend of comfort and convenience with this charming 2-bedroom apartment nestled in the heart of Jomtien, Pattaya. Located in the esteemed Porch Land 2 complex, this fully furnished flat offers a generous 74 square meters of living space, providing ample room for relaxation and entertainment. Situated on the third floor of an eight-story building, this apartment is ideal for those seeking a tranquil retreat with easy access to the vibrant city life. The property is available under a foreign quota, making it an excellent opportunity for international buyers. Priced at just ฿2,690,000, this home offers incredible value. Whether you're looking for a permanent residence or a vacation getaway, this apartment is ready to wel...

## ฿ 2,690,000

### UNIT PARAMETERS:

UID	FS-234523
quota	foreign quota
type	2 bedroom
size	74m <sup>2</sup>
floor	3
view	city view
quality	not chosen
transfer cost	
transfer fee payer	Seller 50/ Buyer 50
additional cost	

### PROJECT PARAMETERS:

district	Jomtien
buildings	2
floors	8
built in	2012
maintenance	฿ 8,880/year

### FACILITIES:

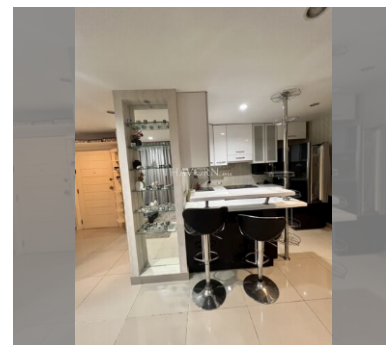
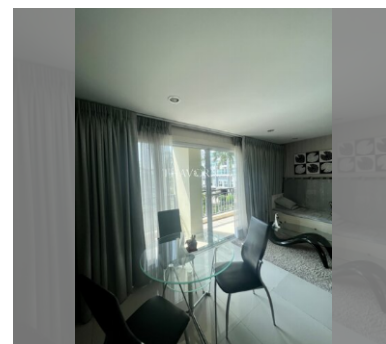
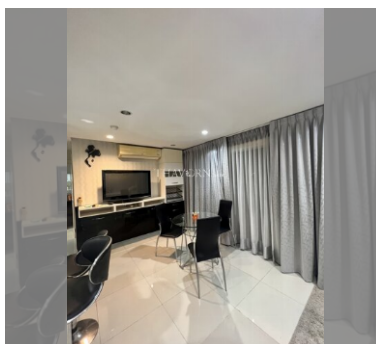
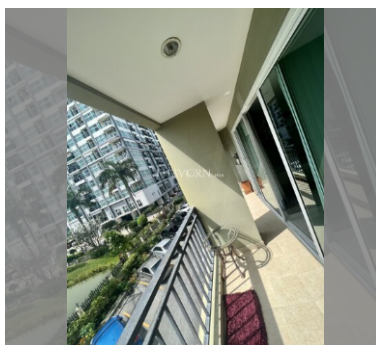
General information: boutique, open parking, covered parking.

Swimming pool: swimming pool, kids pool.

Chill zone: chill zone.

Health zone: gym.

Other: lobby, meeting room, CCTV, security.



details

