

Condo for sale 2 bedroom 64 m<sup>2</sup> in Empire Tower Pattaya, Pattaya

Welcome to your dream home at Empire Tower Pattaya! Nestled in the vibrant city of Pattaya, in the sought-after Jomtien area, this stunning 2-bedroom apartment offers a perfect blend of luxury and comfort. Situated on the 10th floor of a modern 24-story building, this brand-new residence boasts a spacious 64 m<sup>2</sup> of beautifully furnished living space. Step inside and be greeted by a contemporary design that seamlessly combines style and functionality. The open-plan living area is perfect for entertaining guests or simply relaxing after a long day. Both bedrooms offer ample space and comfort, ensuring a restful night's sleep. Empire Tower Pattaya is more than just a home; it's a lifestyle. With full furnishings included, you can move in and ...

฿ 6,400,000

## UNIT PARAMETERS:

UID	FS-228024
quota	foreign quota
type	2 bedroom
size	64m <sup>2</sup>
floor	10
view	city view
quality	not chosen
transfer cost	
transfer fee payer	On buyer
additional cost	

## PROJECT PARAMETERS:

district	Jomtien
buildings	1
floors	24
built in	2023

## FACILITIES:

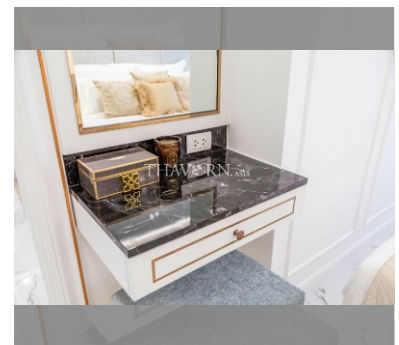
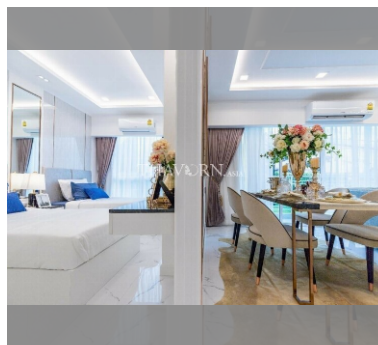
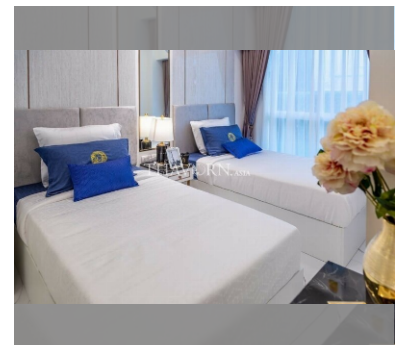
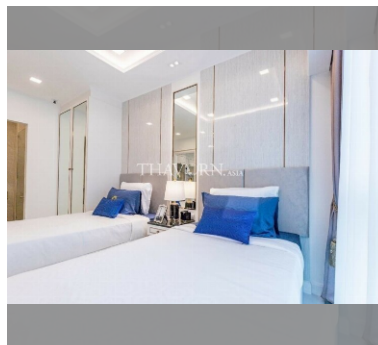
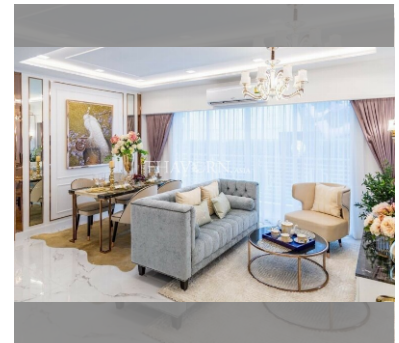
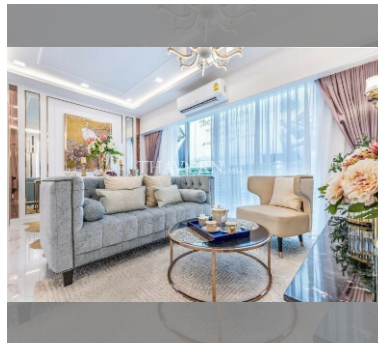
**General information:** highrise, multi-level parking, covered parking.

**Swimming pool:** swimming pool, kids pool, rooftop pool, infinity view, sunbathing area.

**Chill zone:** chill zone, garden, rooftop chillout.

**Health zone:** gym, sauna.

**Other:** reception, lobby, clubhouse, kids playgarden, CCTV, security.


[details](#)
