

Condo for sale 1 bedroom 32 m² in Empire Tower Pattaya, Pattaya

Welcome to your new home in the heart of Pattaya! This charming 1-bedroom apartment in the prestigious Empire Tower Pattaya is waiting for you. Located in the vibrant Jomtien area, this newly built property offers the perfect blend of modern living and convenience. Perched on the 5th floor of a 24-story building, this 32 m² apartment comes fully furnished, ready for you to move in and start enjoying the good life. The stylish decor and thoughtful layout make the most of every inch, creating a cozy and inviting atmosphere. Priced at 3,850,000, this property is available under a foreign quota, making it an excellent investment for international buyers. Whether you're looking for a permanent residence or a vacation getaway, this apartment i...

฿ 3,850,000

UNIT PARAMETERS:

UID	FS-228016
quota	foreign quota
type	1 bedroom
size	32m ²
floor	5
view	sea view
quality	not chosen
transfer cost	
transfer fee payer	On buyer
additional cost	

PROJECT PARAMETERS:

district	Jomtien
buildings	1
floors	24
built in	2023

FACILITIES:

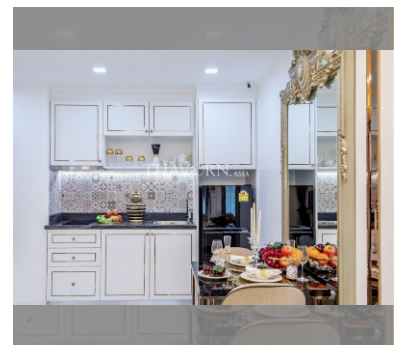
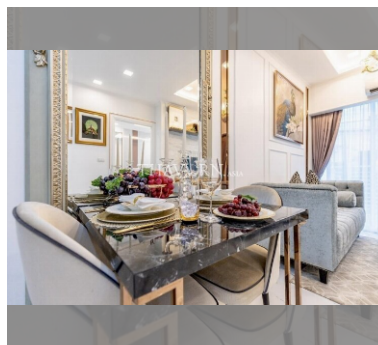
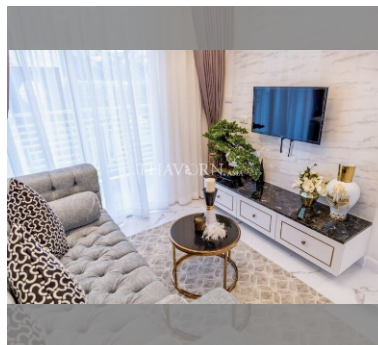
General information: highrise, multy-level parking, covered parking.

Swimming pool: swimming pool, kids pool, rooftop pool, infinity view, sunbathing area.

Chill zone: chill zone, garden, rooftop chillout.

Health zone: gym, sauna.

Other: reception, lobby, clubhouse, kids playgarden, CCTV, security.

[details](#)