

## Condo for sale 1 bedroom 30 m<sup>2</sup> in Neo Sea View, Pattaya

Welcome to your dream getaway in the heart of Pattaya! This charming 1-bedroom apartment, nestled in the prestigious Neo Sea View complex, offers an unbeatable blend of comfort and convenience. Spanning 30 square meters, this fully furnished gem is perfect for those seeking a cozy retreat or a savvy investment opportunity. Located in the serene Najomtien area, this apartment is positioned on the 2nd floor of an 8-story building, providing a peaceful escape with easy access to all the vibrant attractions Pattaya has to offer. With foreign ownership available, it's an ideal choice for international buyers looking to make Pattaya their home. Priced at just 1,800,000, this property is a fantastic value, offering a modern living space with al...

### ฿ 1,800,000

#### UNIT PARAMETERS:

UID	FS-223804
quota	foreign quota
type	1 bedroom
size	30m <sup>2</sup>
floor	2
view	partial sea view
quality	not chosen
online viewing	on
transfer cost	50/50
transfer fee payer	
additional cost	
exclusive	on

#### PROJECT PARAMETERS:

district	Na Jomtien
buildings	4
floors	8
built in	2014

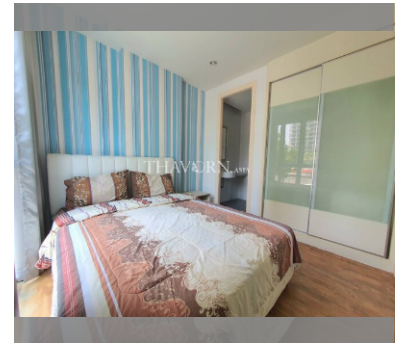
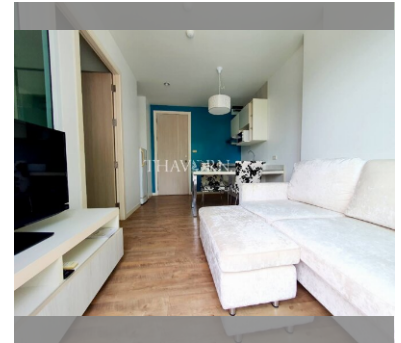
#### FACILITIES:

**General information:** boutique, meters to beach: 50, minutes to beach: 1, shuttle bus, covered parking.

**Swimming pool:** rooftop pool, sunbathing area.

**Health zone:** gym.

**Other:** reception, CCTV, security, room service.



details

