

Condo for sale studio 26 m² in Dusit Grand Park, Pattaya

฿ 1,950,000

UNIT PARAMETERS:

UID	FS-223740
quota	foreign quota
type	studio
size	26m ²
floor	7
view	city view
transfer cost	
transfer fee payer	50/50
additional cost	

PROJECT PARAMETERS:

district	Jomtien
buildings	6
floors	8
built in	2015
maintenance	฿ 10,920/year

FACILITIES:

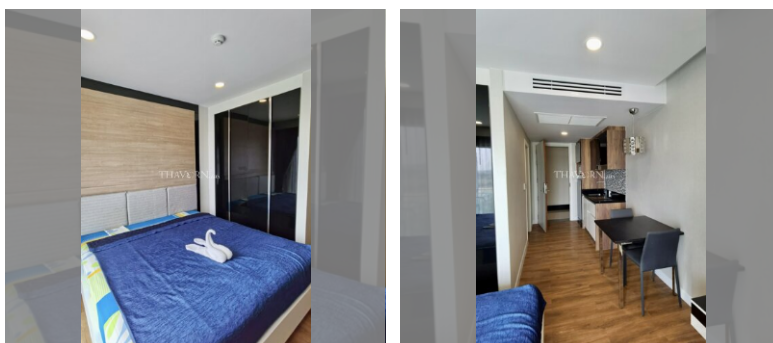
General information: resort, meters to beach: 500, minutes to beach: 10, underground parking, open parking.

Swimming pool: swimming pool, kids pool, water slides, waterfall, jacuzzi.

Chill zone: chill zone, garden.

Health zone: gym, sauna.

Other: lobby, clubhouse, CCTV, security, room service.



details

