

Condo for sale 2 bedroom 118 m² in The Park Jomtien, Pattaya

Discover the perfect blend of comfort and style in this stunning 2-bedroom apartment located in the sought-after The Park Jomtien complex in Pattaya. With a generous 118 m² of living space, this fully furnished flat offers everything you need for a relaxed and convenient lifestyle. Situated on the 4th floor of an 8-story building, enjoy a sense of privacy and tranquility while still being part of a vibrant community. Priced at an attractive 5,640,000, this property presents a fantastic opportunity for foreign ownership. The Park Jomtien is renowned for its modern amenities and prime location in the Jomtien district, making it an ideal choice for those looking to enjoy the best of Pattaya. Whether you're seeking a permanent residence or a...

฿ 5,640,000

UNIT PARAMETERS:

UID	FS-208794
quota	foreign quota
type	2 bedroom
size	118m ²
floor	4
view	city view
quality	not chosen
transfer cost	
transfer fee payer	Seller 50 / Buyer 50
additional cost	

PROJECT PARAMETERS:

district	Jomtien
buildings	3
floors	8
built in	2011

FACILITIES:

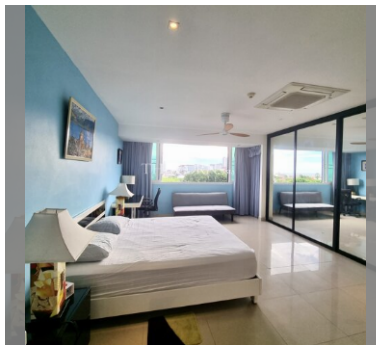
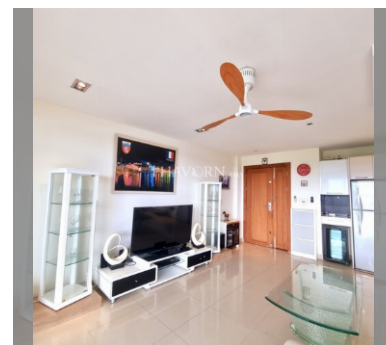
General information: resort, open parking, covered parking.

Swimming pool: swimming pool.

Chill zone: chill zone, garden.

Health zone: gym.

Other: lobby, CCTV, security.



details

