

Condo for sale 1 bedroom 23 m² in Lumpini Park Beach Jomtien, Pattaya

Discover the perfect coastal retreat with this charming 1-bedroom apartment nestled in the heart of Pattaya's vibrant Jomtien district. Located in the prestigious Lumpini Park Beach Jomtien complex, this cozy 23 m² flat offers a harmonious blend of comfort and style, fully furnished to meet all your needs. Perched on the 16th floor of a 30-story building, this apartment boasts breathtaking views and a serene atmosphere, ideal for unwinding after a day of exploring the bustling city or relaxing on the nearby beaches. With its prime location, you're just moments away from Pattaya's lively attractions and serene seaside spots. Priced at an attractive 1,400,000, this property presents an excellent opportunity for those looking to own a piece...

฿ 1,400,000

UNIT PARAMETERS:

UID	FS-192247
quota	foreign quota
type	1 bedroom
size	23m ²
floor	16
view	partial sea view
quality	not chosen
transfer cost	
transfer fee payer	on buyer transfer fees
	70,000 Bath
additional cost	
exclusive	on

PROJECT PARAMETERS:

district	Jomtien
buildings	3
floors	30
built in	2013
maintenance	฿ 11,040/year

FACILITIES:

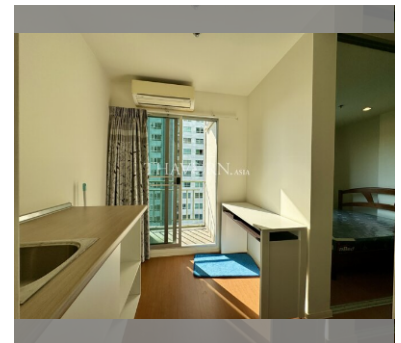
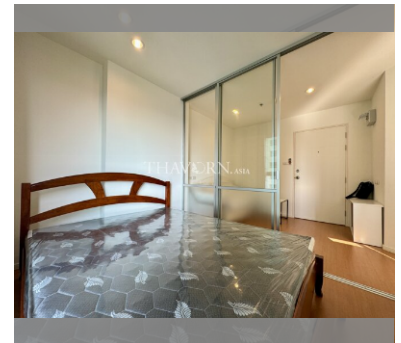
General information: highrise, meters to beach: 50, minutes to beach: 1, open parking, multy-level parking.

Swimming pool: swimming pool, kids pool, rooftop pool, jacuzzi.

Chill zone: chill zone, garden, rooftop chillout.

Health zone: gym, sauna.

Other: reception, clubhouse, meeting room, games room, kids playgarden, CCTV, security.



details

