

## Condo for rent studio 30 m<sup>2</sup> in Thepthip Mansion, Pattaya

### ฿ 12,000

#### UNIT PARAMETERS:

UID	FR-242345
type	studio
size	30m <sup>2</sup>
floor	6
view	partial sea view
per month	15,000 THB
year contract	12,000 THB / month
security deposit	2 months
quality	good
equipment: furniture, household appliances, kitchen appliances, air conditioner, internet, television, refrigerator	

#### PROJECT PARAMETERS:

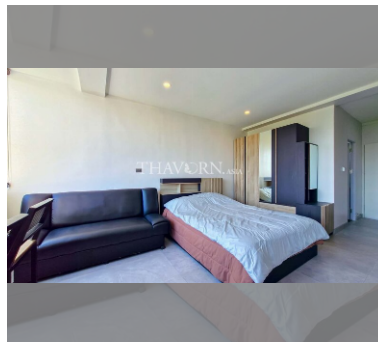
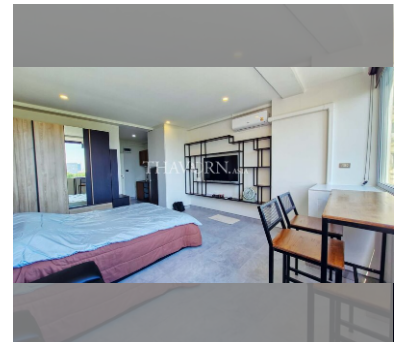
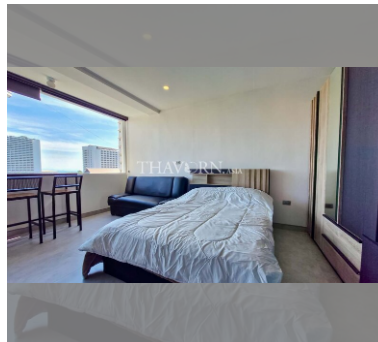
district	Pratumnak
buildings	1
floors	15
built in	1995

#### FACILITIES:

General information: highrise, meters to beach: 500, minutes to beach: 7, open parking.

Swimming pool: swimming pool.

Other: lobby, CCTV, security.

[details](#)