

Condo for sale 2 bedroom 90 m² in Center Point, Pattaya

฿ 3,500,000

UNIT PARAMETERS:

UID	FS-5744
quota	thai quota
type	2 bedroom
size	90m ²
floor	5
view	city view
transfer cost	50/50

PROJECT PARAMETERS:

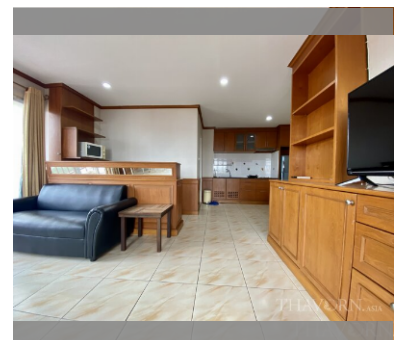
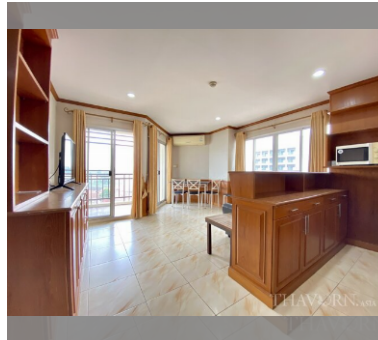
district	Central Pattaya
buildings	2
floors	7
built in	2008
maintenance	฿ 21,600/year

FACILITIES:

General information: resort, pets are allowed, open parking, covered parking.

Swimming pool: swimming pool, kids pool, pool bar .

Other: lobby, CCTV, security, minimart.



details

