

Condo for sale 2 bedroom 114 m<sup>2</sup> in PKCP Tower, Pattaya

Welcome to this splendid 2 bedroom condo located in the reputable PKCP Tower, situated in the heart of vibrant Central Pattaya. Listed for sale, the condo presents an incredible opportunity for anyone looking at lucrative real estate offerings available in Pattaya. The asking price for this prime property is 6,150,000. Sharing a part of the 17th floor in an eminent 27-floor building, the condo boasts a generous living area of 114 sq m. The condo is handed over as partly furnished, offering a splendid arrange of possibilities for you to decorate and design according to your preference, creating an environment that caters to your personal style and taste. The property is a flat type real estate holding that promises high returns and serves...

**฿ 6,150,000**

## UNIT PARAMETERS:

UID	FS-26933
quota	foreign quota
type	2 bedroom
size	114m <sup>2</sup>
floor	17
view	city view
transfer fee payer	50/50
exclusive	on

## PROJECT PARAMETERS:

district	Central Pattaya
buildings	1
floors	27
built in	2009

## FACILITIES:

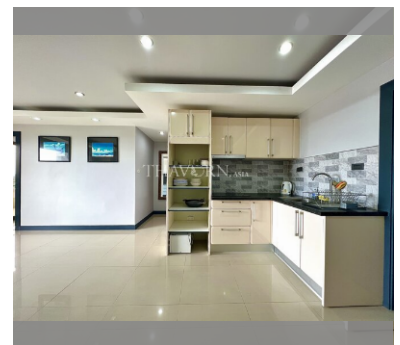
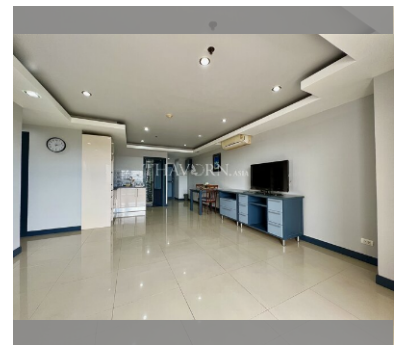
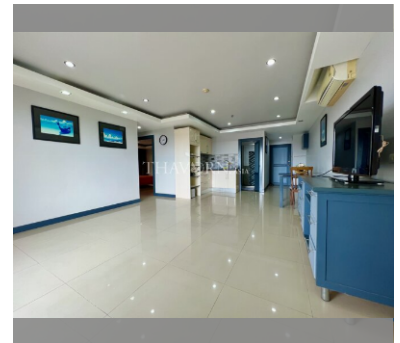
General information: highrise, covered parking.

Swimming pool: swimming pool.

Chill zone: chill zone.

Health zone: gym.

Other: reception, lobby, CCTV, security.

[details](#)