

Condo for sale 1 bedroom 38 m² in Park Lane Jomtien Resort, Pattaya

฿ 1,450,000

UNIT PARAMETERS:

UID	FS-228344
quota	thai quota
type	1 bedroom
size	38m ²
floor	3
view	garden view
transfer fee payer	50/50

PROJECT PARAMETERS:

district	Jomtien
buildings	4
floors	8
built in	2010

FACILITIES:

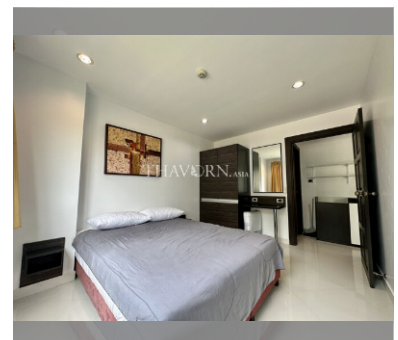
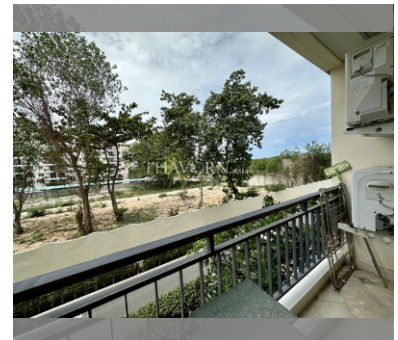
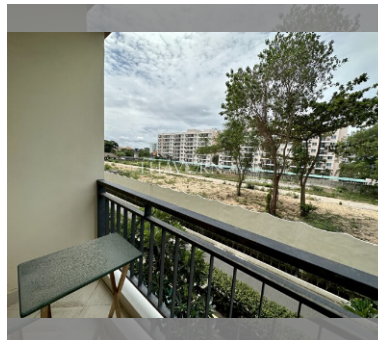
General information: resort, meters to beach: 500, minutes to beach: 10, open parking.

Swimming pool: swimming pool, kids pool, jacuzzi.

Chill zone: chill zone, garden.

Health zone: gym.

Other: CCTV, security, minimart.



[details](#)

